



Formula 330 Sun Sport



Make: Formula
Model: 330 Sun Sport
Length: 33 ft
Beam: 10 ft 2 in
Year: 2005
Condition: Used

Engine Make: Mercruiser FWC
Hull Material: Fiberglass
Draft: 2 ft 11 in
Engine Model: 8.1 Ltr w/Bravo III
Drive
Engine Power: 375, 375 hp

Foster Yacht Sales

2800 Solomons Island Road, Edgewater, MD 21037, United States
Tel: 410-224-4944 Tel: 410-401-8756 Fax: 443-926-9950 fosteryachtsales@gmail.com
<http://www.jfboats.com>

Description

Powered by Twin 8.1 Ltr 375 hp Fresh Water Cooled Mercruiser 496 engines with Bravo III Drives and about 837 hours, this 2005 Formula 330 Sun Sport has the perfect combination of power and comfort, making it an ideal boat for enjoying days and nights on the water!

On deck, she has a comfortable wrap-around cockpit seating design with plenty of storage beneath the seats. Two lightweight cockpit tables can be removed and stored, or used as a base for creating a large cockpit sun pad with an insertable cushion.

To port, a wet bar entertainment center features a covered sink and inset ice box with drain, and plenty of additional storage along with a dedicated trash receptacle. A companion lounge provides additional seating and storage.

A double wide helm bench has flip in bolsters and at the helm, she has a full array of instrumentation, including:

- Simrad Touch Screen GPS/Fish Finder
- Trim Tabs
- Electric Windlass
- Remote Spotlight
- Windshield Wiper
- Stereo Helm Remote for Clarion Cabin Stereo

Heading below brings you into a large forward cabin with a galley area to port, featuring a refrigerator, microwave, Corian countertops with an inset cooler, and plenty of storage cabinets. A forward dinette quickly converts to a large double berth and flat screen TV for evening entertainment. A private enclosed marine head with Vacu-flush toilet and sink completes the cabin! Additional features include:

- Air conditioning
- Full Canvas Enclosure
- Snap Down Tonneau Cover
- Ski Tow Ring
- Shore Power Connection
- Battery Charger
- Transom Shower
- Shore Water Connection

The perfect boat for cruising the bay, and spending a weekend out exploring!

Measurements

LOA:	33 ft	Deadrise at Transom:	20 °
Beam:	10 ft 2 in	Windlass:	Electric Windlass
Max Bridge Clearance:	6 ft		
Max Draft:	2 ft 11 in	Fuel Tanks Capacity:	160 gal
Cabin Headroom:	5 ft 7 in	Fresh Water Tanks Capacity:	20 gal
Dry Weight:	9700 lb	Holding Tank Capacity:	26 gal
Trim Tabs:	Yes	Number of double berths:	1
		Number of Cabins:	1
		Number of Heads:	1

Propulsion

Engine #1

Engine Make:	Mercury FWC	Engine Year:	2005
Engine Model:	8.1 Ltr w/Bravo III Drive	Hours:	837
		Power:	375 hp
Primary Engines:	Inboard/ Outboard		
Drive Type:	Stern Drive		
Location:	Port		

Engine #2

Engine Make:	Mercury FWC	Engine Year:	2005
Engine Model:	8.1 Ltr w/Bravo III Drive	Hours:	837
		Power:	375 hp
Primary Engines:	Inboard/ Outboard		
Drive Type:	Stern Drive		
Location:	Starboard		

Disclaimer

The Company offers the details of this vessel in good faith but cannot guarantee or warrant the accuracy of this information nor warrant the condition of the vessel. A buyer should instruct his

agents, or his surveyors, to investigate such details as the buyer desires validated. This vessel is offered subject to prior sale, price change, or withdrawal without notice.

Photos



Starboard Bow



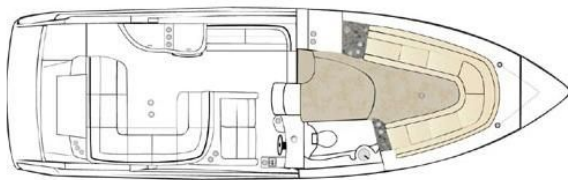
Port Bow



Bow



Starboard Stern w/Enclosure



Manufacturer Provided Image



Full Tonneau Cover



Cockpit



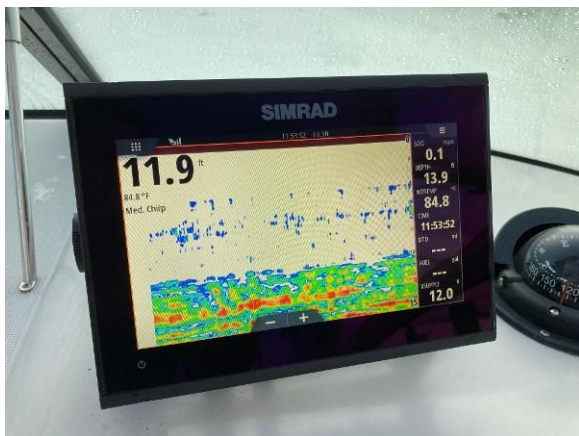
Facing Forward from Doorway



Helm w/Instrumentation



Simrad Touch Screen GPS



Simrad Touch Screen Fish Finder



Double Wide Helm Seat



Cockpit, Port Side



Wet Bar



Wet Bar Covered Inset Cooler/Sink



Inset Cooler w/Drain & Fresh Water Sink



Companion Lounge



Starboard Side



Wrap Around Cockpit Seating



Cockpit Sun Pad



Refrigerator



Microwave



Corian Counters



Clarion Stereo



Forward Dinette



Forward V-Berth Double



Entrance to Private Head



Private Head w/Sink & VacuFlush Toilet



Twin 8.1 Ltr 375 hp Fresh Water Cooled
Mercruisers



Starboard Engine



Port Engine



Bravo III Drives